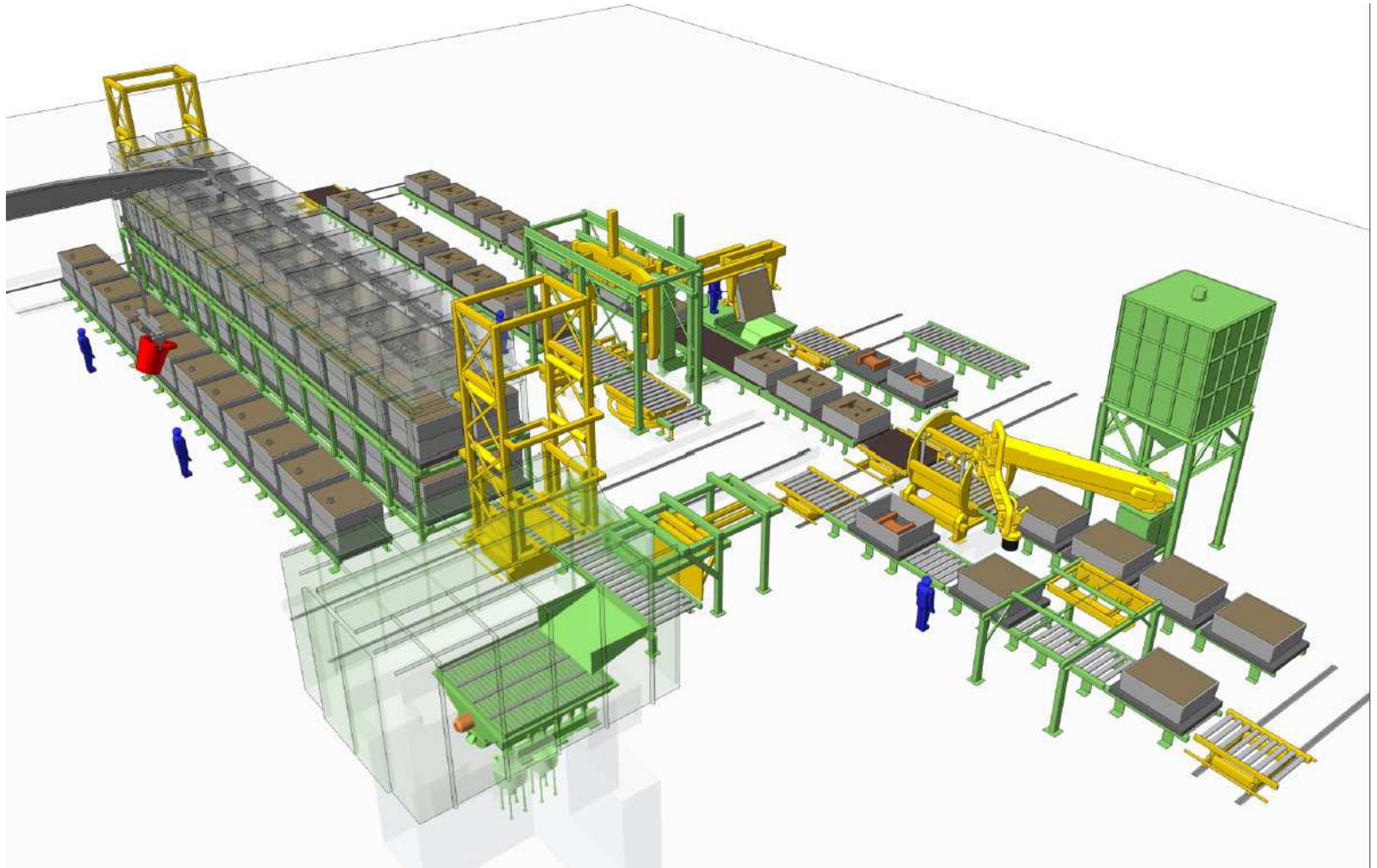


AVAILABLE MACHINES ON STOCK

Complete No-Bake Flasksless moulding system

TECHNICAL DATA

Max mould size :	1600 x 2000 x 640 + 640 mm
Bolster plate size :	1800 x 2200 mm
Pouring plate size :	1800 x 2200 mm
Expected production :	Min. mould size: 20 moulds/h Med. mould size: 12 moulds/h Max. mould size: 10 moulds/h
Mixer size and process :	T36/80S – Furan (30 t/h)
Sand reclamation plant :	Mechanical reclamation system 30 t/h





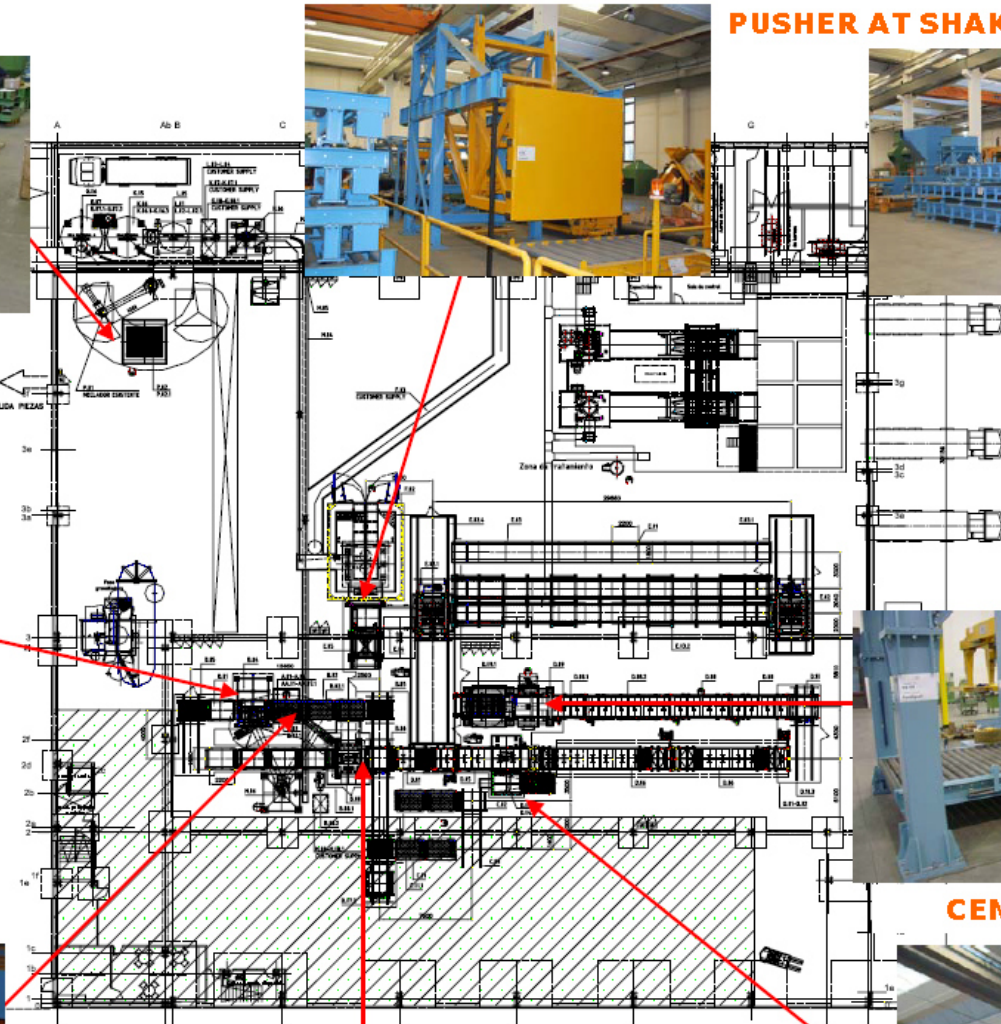
BIG VIBRATING TABLE



MIXER & STRICKLER



SMALL VIBRATING TABLE



PUSHER AT SHAKE-OUT



TRANSFER CAR



CENTERING & CLOSING MANIPULATOR



ROLLOVER

PAINTING STATION



The system includes the following equipment :

- T36/80S Double arm continuous mixer
- Fast-Loop moulding line (bolster plates excluded)
- Pattern change
- Painting, core-setting and automatic closing line
- Pouring and cooling lines (pouring plates excluded)
- Shake-out unit, pneumatic transport system and mechanical reclamation system

Details of the system:

Page 1 of 2

A	T 36/80-S Mixer
A1	Accessories for T36/80-S Mixer
A2	CATA 2 System
A3	ACCU Pump System
A4	Sand Heaters
B	Moulding area :
	Fast-Loop composed of Vibrating table, powered roller conveyors, strickling device, transfer cars, electrical control panel and teleassistance
	Roll-over machine, RB 3300 type, complete with hydraulic power pack
B1	Pattern change area composed of roller conveyors and transfer car
C	Painting / Core setting area composed of belt conveyors, painting station type SV, coating tank and painting system, slat conveyors
D	Closing area with automatic closing unit
E	Pouring / Cooling area composed of gravity roller conveyors, clamping devices, transfer cars with elevators, powered roller conveyors, mould push off system and electrical control panel
E1	Transfer cars for pouring and cooling area
F	Shake-out unit 3000x4000, Pre-reclamation area and electrical control panel

Details of the system:

G	Pneumatic transport systems, powered mechanical reclamation system and sand distribution after the reclamation system
G1	Pneumatic transport systems of sand to be reclaimed from storage silo to reclamation system
H	1-ST Stage of sand reclamation system with attrition mills
H1	Pneumatic transport systems sand from attrition mills to 2nd stage of reclamation system
K	2nd stage reclamation system
K1	Pneumatic transport system of reclaimed sand from the reclamation system to the storage silo
L	Pneumatic transport system of reclaimed sand from the storage silo to the mixer silo
L1	Pneumatic transport systems for new sand from the storage silo the the mixer silo
L2	Pneumatic transport system of new sand from storage silo to mixer T36-8 silo
M	Core shop manual mixer, type T36/8EL complete with accessories and electrical control panel

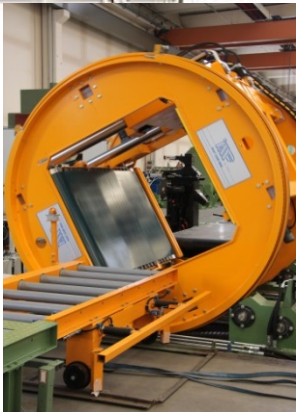
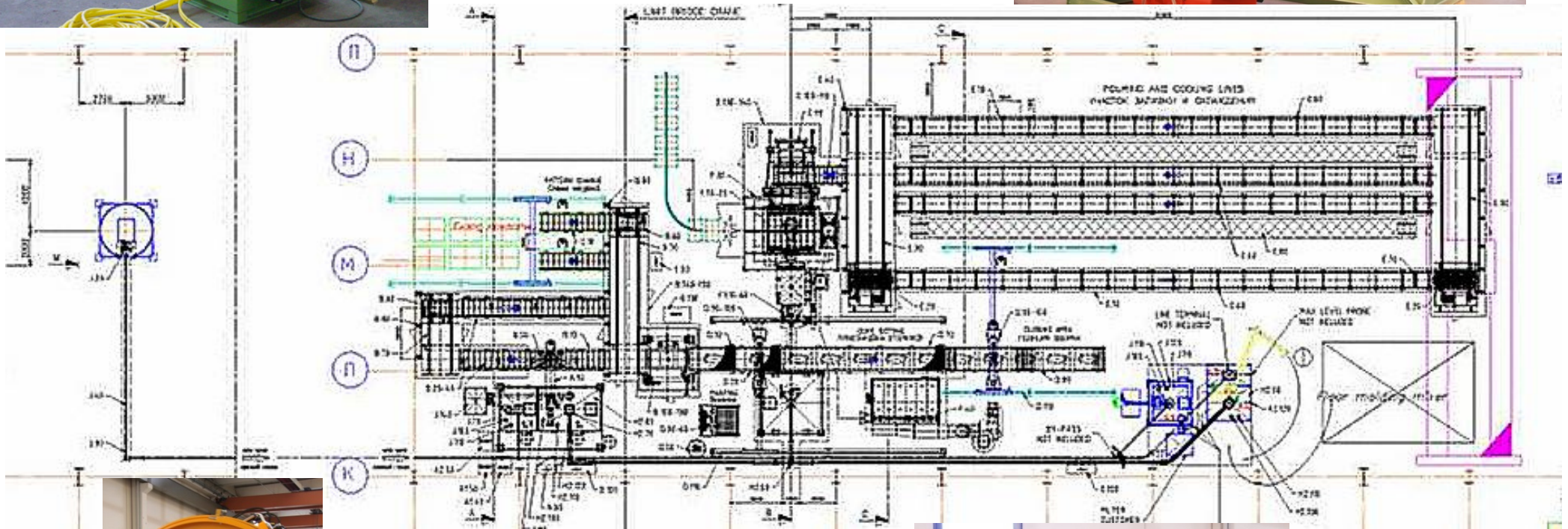
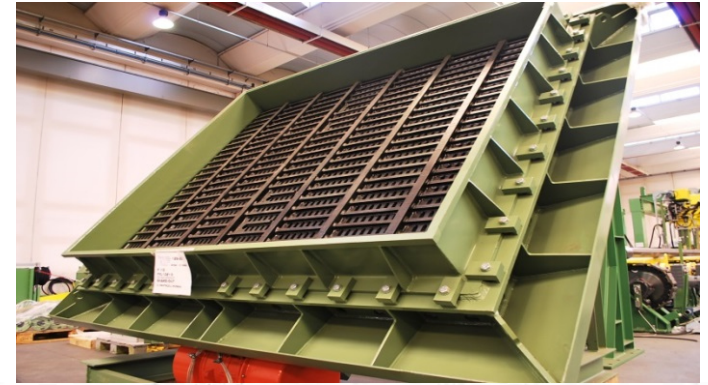
AVAILABLE MACHINES ON STOCK
No-Bake Flaskless moulding system

TECHNICAL DATA

- Max mould size : **1200 x 1600 x 500 + 500 mm**
- Bolster plate size : **1300 x 1800 mm**
- Pouring plate size : **1300 x 1800 mm**
- Production : **10 - 12 moulds/h**

- Mixer size and process : **T36/30 – furan (30 t/h)**

- Sand reclamation plant : **Mechanical reclamation system: 10-12 t/h**



The system includes the following equipment :

- T36/30 Single arm continuous mixer
- Fast-Loop moulding line (bolster plates excluded)
- Pattern change
- Painting, core-setting and closing line
- Pouring and cooling lines (pouring plates excluded)
- Shake-out unit, pneumatic transport system and mechanical reclamation system

Details of the system:

Page 1 of 1

A	T36-30 SINGLE ARM MIXER + CATA 2 + ACCU PUMP	
A1	ACCESSORIES FOR THE MIXER	
A2	CATA 2 SYSTEM	
A3	ACCU PUMP SYSTEM	
A4	SAND HEATERS	
B	FAST LOOP MOULDING AREA	
B1	Roll-Over 2 Columns	
D	PAINTING, CORE SETTING AND CLOSING LINE	
E	POURING AND COOLING AREA	
E1	TRANSFER CAR FOR POURING LINE-Plate Guide= 830 mm	
F	SHAKE OUT / PRE RECLAMATION AREA	
F.01	FILTER SLEEVE TYPE - 387 MQ - 25000 Nm3/h 15°C - O.M.A.R.	
F1	10-12T/H MECHANICAL RECLAMATION SYSTEM	
H1	PNEUMATIC TRANSPORT FOR RECLAIMED SAND FROM RECLAMATION TO BUFFER SILO	
H2	PNEUM. TRANS. FOR RECLAIMED SAND FROM BUFFER SILO TO FAST LOOP MIXER AND EXISTING MIXER	
J	NEW SAND LOADING TO FAST LOOP MIXER SILO AND CORE MAKING MIXER	
K	SAND HEATER FOR T36-3 MIXER	
L	ADDITIONAL PNEUMATIC TRANSPORT SYSTEM ELEMENTS	